

Study material

Subject title: **CRISIS MANAGEMENT**

Author: Ing. et Ing. Hana Malachová, Ph.D.

Topic 3: Crisis management in the Czech Republic

Content:

Introduction

1. Basic terms and its' meaning
2. Crisis management authorities
3. Security system of the state

Conclusion



esf european
social fund in the
czech republic



EUROPEAN UNION



MINISTRY OF EDUCATION,
YOUTH AND SPORTS



OP Education
for Competitiveness



UNIVERSITY
OF DEFENCE

INVESTMENTS IN EDUCATION DEVELOPMENT

Introduction

Development of security environment, existing and new security threats both social and natural character place state authorities and state administration before tasks to continually improving and developing of whole system of crisis management. Due to economic aspects seems necessary to continue in optimization of national security system and international cooperation in European Union.

1. Basic terms and its´ meaning.

CRISES - are situations that represent permanently or for an extended period of time deviation from normal state, which more or less threatens the goal of an organization or its existence.

RELATIONSHIP BETWEEN THREATS AND RISKS

International standards distinguish between the terms.

THREATS: - understood as a primary actor, phenomenon existing outside us,
- an external factor that can damage some specific value.

Natural character:

- *natural disaster,*
- *ecological disaster, etc.*

Social character:

- *terrorism*
- *disputes among states*
- *organized crime*

- Crisis are different, but in certain extent meet the following characteristics:
 - moment of surprise,
 - lack of information,
 - increasing number of events
 - loss of control over the situation,
 - vital interests are threatened
 - increasing external pressure on information,
 - developing defeatist mood,
 - panic is started
 - decomposition of common decision-making processes.

CRISIS SITUATION – is an unpredictable or hardly predictable course of events after disruption of equilibrium states - natural, technological and social systems, threatening lives of people, the environment, economy, spiritual (ecclesiastical) and material values of the people.

Crisis communication

It represents the organization's ability to openly inform the society (the public) about crisis situations (accident, natural disaster, epidemic, financial-, economic- or other crisis), particularly on their implications and impacts on nature and society as well as on taken measures.

Crisis management

is a summary of scientific knowledge, professional practice, preventive and decision-making measures allowing managers to successfully solve crisis situation.

Crisis management shall denote:

the summary of management activities of crisis management authorities focused on analysis and evaluation of security risks and planning, organization, implementation and control of activities performed in connection with

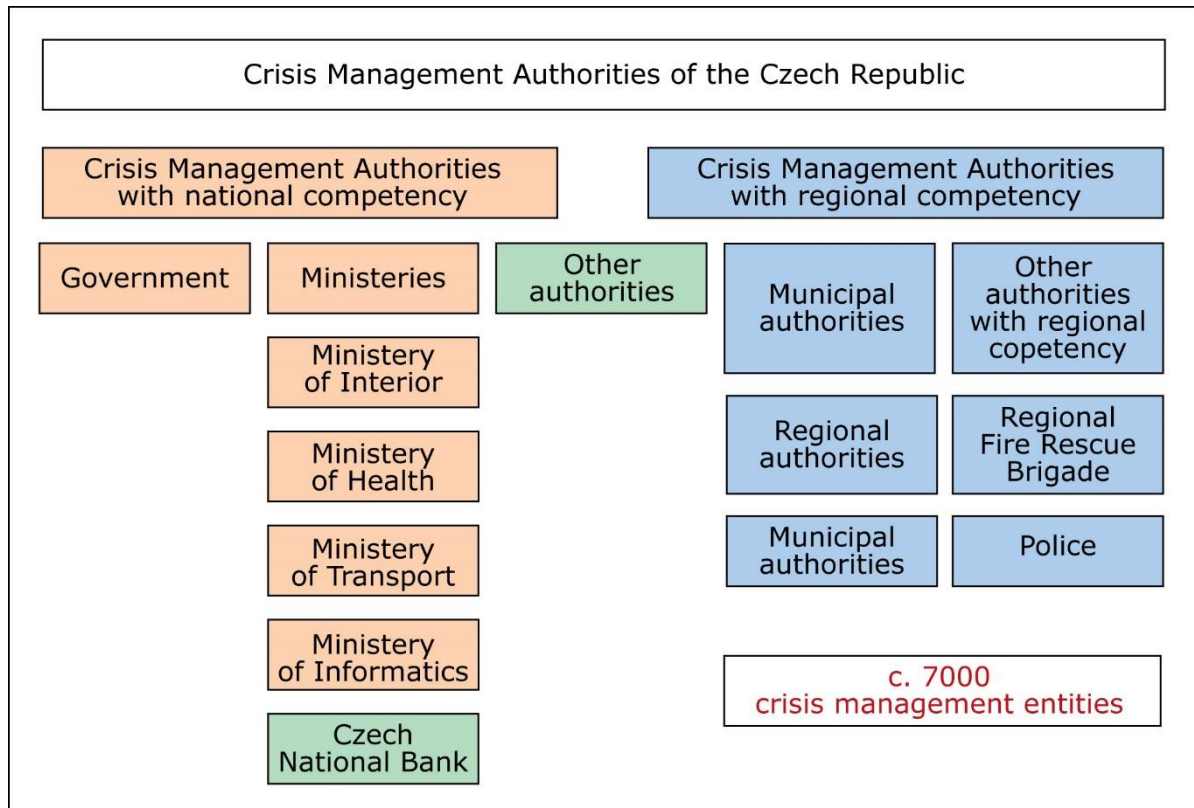
1. preparation for crisis situations and their solution or
2. protection of critical infrastructure,

2. Crisis management authorities.

CRISIS MANAGEMENT AUTHORITIES:

- Government,
- Ministries and other central administrative authorities,
- Czech National Bank,
- Regional Authorities and Other Bodies with Regional Jurisdiction,
- Authorities of Municipality with Extended Powers,
- Municipal Authorities.

INVESTMENTS IN EDUCATION DEVELOPMENT



Source:

http://ec.europa.eu/echo/files/civil_protection/vademecum/images/cz/structure1big.jpg

According to Law No. 240/2000 Coll., on crisis management and on following amendments, is the coordination body in preparation for crises situations by the Ministry of Interior of the Czech Republic.

Security Councils and Crisis Staffs

The National Security Council of the Czech Republic is the governmental advisory body for the security of the Czech Republic. The chairperson is the Minister of the Interior. The other members of the National Security Council are appointed heads of assigned ministries. The National Security Council of the Czech Republic was established by the Government and has become its advisory body.

To ensure its tasks, the Council has established four permanent working committees. Their responsibilities were assigned by a Government decision:

- The Defence Planning Committee
- The Civil Emergency Planning Committee
- The Foreign Security Policy Co-ordination Committee
- The Intelligence Activities Committee.

Security Council - is a permanent working body of the Government for coordination of the security issues of the Czech Republic and preparation of proposals to carry it out.

It is established according to Article 9 of Constitutional Act No. 110/1998 Coll., on the Security of the Czech Republic. Security Council, within the scope of delegation established by the Government of the Czech Republic, prepares for the government proposals to ensure security of the Czech Republic.

Security Council of the Region and Security Council of the Municipality with extended powers – are advisory bodies of the founder for preparedness for crisis situations. The Chairman of the Regional Security Council is the District Commissioner, who appoints members of the Regional Security Council. The Chairman of the Security Council of the Municipality with extended powers is the Mayor of the Municipality with extended powers, who appoints members of the Security Council of the Municipality with extended powers.

At the meeting of the Regional Security Council and the Security Council of the Municipality with extended powers, the security status and the state of preparedness for crisis situations in the Region or in the administrative district of the Municipality with extended powers is discussed and assessed. Other persons may be invited at the meeting of the Regional Security Council and the Security Council of the Municipality with extended powers, providing their participation is necessary for assessment of security status and state of preparedness for crisis situations.

Content of activities and composition of the Regional Security Council and Security Council of the Municipality with extended powers set § 6-9 Government Regulation of the Czech Republic No. 462/2000 Coll., to execution of § 27 and § 28 of the Act No. 240/2000 Coll., on crisis management and amending certain Laws (Crisis Law).

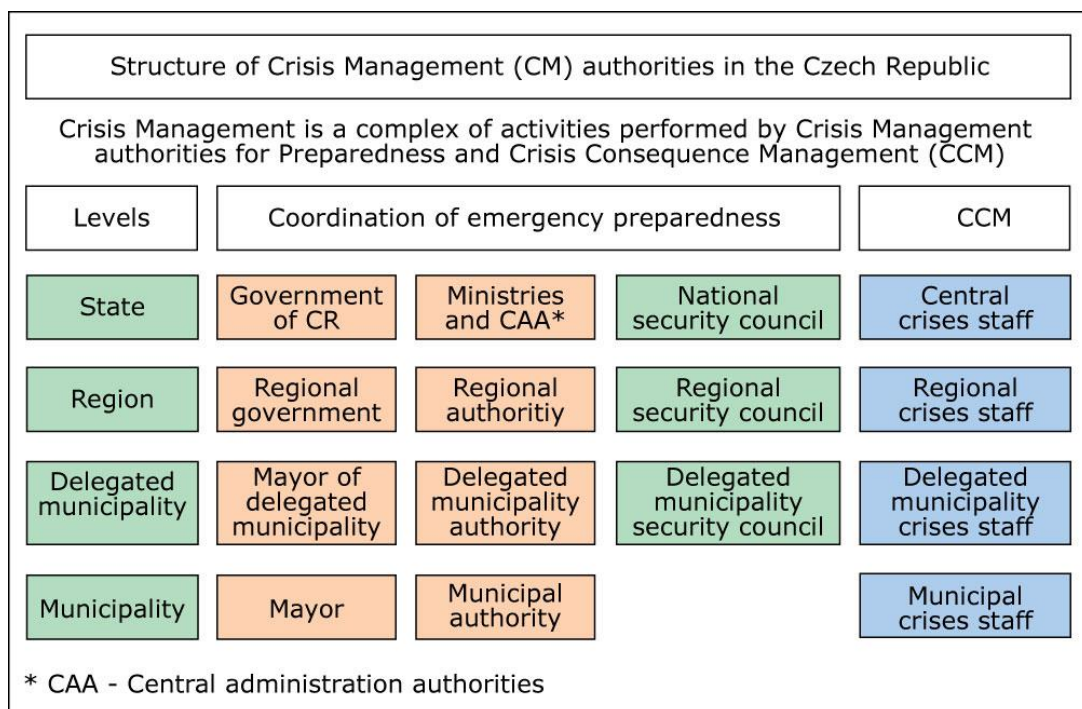
Central Crisis Staff is a working body of the Government for crisis situations solution. Its composition and activities are determined by the Statute of the Central Crisis Staff approved by the Government. Central Crisis Staff has 17 members, The Chairman is appointed by Prime Minister according to situation character – either Minister of Interior or Minister of Defence.

Regional Crisis Staff and Crisis Staff of the Municipality with extended powers are working bodies of the promoter for crisis situations solution. The Chairman of the Regional Crisis Staff is the Regional Commissioner who appoints members of the Regional Crisis Staff. The Chairman of the Crisis Staff of the Municipality with extended powers is the Mayor of the Municipality with extended powers, who appoints members of the Crisis Staff of the Municipality with extended powers.

INVESTMENTS IN EDUCATION DEVELOPMENT

Contents of activities and composition of Regional Crisis Staff and Delegated Municipality Security Council set § 12 - 14 Government Regulation of the Czech Republic No. 462/2000 Coll., to execution of § 27 and § 28 of the Act No. 240/2000 Coll., on crisis management and amending certain Laws (Crisis Law).

Municipal Crisis Staff – Municipality Mayor may establish the Municipal Crisis Staff in order to prepare for crisis situations and their solution. Composition and activities of the staff are defined in § 12 a 13 Government Regulation of the Czech Republic No. 462/2000 Coll., to execution of § 27 and § 28 of the Act No. 240/2000 Coll., on crisis management and amending certain Laws (Crisis Law).



Source: http://ec.europa.eu/echo/files/civil_protection/vademecum/images/cz/structure2big.jpg

3. The Security System of the Czech Republic

To safeguard its security interests, the Czech Republic creates and develops a **comprehensive, hierarchically organised security system** which is a combination of the political (domestic and foreign), military, internal security, population protection, economic, financial, legislative, legal and social levels. The primary basis of this system is to express legislatively the competence and mutual links of the individual components (legislative, executive, juridical, local and regional government, legal entities and individuals) and their links outside the security system, to establish their duties. The security system provides an institutional framework/tool for the creation and implementation of the Czech Republic's security policy.

The **basic function** of the Czech Republic's security system is to manage and coordinate the activities of the individual component parts responsible for safeguarding the security interests of the Czech Republic. The security of the Czech Republic cannot be just a matter for those components which are explicitly designated for this, but should also involve central and local government bodies, legal entities and individuals to the extent set out in law.

The **structure of the security system** includes the President of the Republic, the Parliament of the Czech Republic, the Government, the National Security Council and its working bodies, central, regional and municipal authorities, the armed forces, armed security corps, intelligence services, and rescue and emergency services. As the supreme executive authority, the **Government** is responsible for the management and operational capability of the entire security system.

A **functional security system** is not only a tool for the effective management of military and non-military crises, but also ensures the prevention of and preparations for potential crisis situations and their early identification and warning.

The functioning of the security system, the construction and development of the capabilities of its components, and economic and financial backup all constitute a long-term, demanding process drawing on lessons learned from the management of various crisis situations and from systematic preparations (e.g. in the form of various exercises) and preventive activities by the individual components.

The security system must constantly react to the changing circumstances and changes in the security environment and to newly emerging threats. For this reason, the security system of the Czech Republic should be viewed as an **open and dynamically developing system**.

Conclusion

The Czech Republic is developing a crisis management system and crisis planning methodology with the aim of strengthening the professional backdrop for the planning, preparation, coordination and unification of measures adopted by public authorities, businesses and entrepreneurs in preparations for crisis situations. It is systematically developing and strengthening crisis management tools, preparations for non-military crisis management and management of the consequences thereof. The medical rescue services and healthcare facilities play an indispensable role by providing urgent health care and arranging for the protection of public health by the relevant bodies.