

# Crisis management

## Crisis management in the Czech Republic



INVESTICE DO ROZVOJE VZDĚLÁVÁNÍ

# The history of mankind is a history of disasters and crises

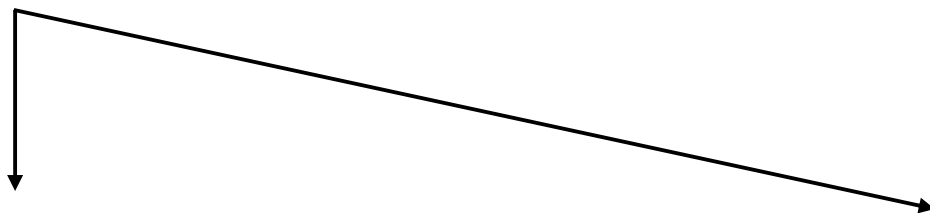


# VZTAH HROZBA A RIZIKA

*Mezinárodní standardy oba pojmy důsledně rozlišují,*

## THREATS:

- understood as a primary actor, phenomenon existing outside us,
- an external factor that can damage some specific value.




### Natural charakter

- natural disaster,
- ecological disaster, etc.

### Social charakter

- disputes among states
- terrorism
- organized crime





**RISK** - derived quantity, expressing  
the **probability** that a particular threat  
caused damage to a protected value

**We fear THREATS  
but undergo RISK**

## EXAMPES 1

USA September 11st 2001





# EXAMPE 2.

Czech Republic 1997, 2002



Operation „RESCUE“



Operation „RECOVERY,  
RECONSTRUCTION“

**CRISES** - are situations that represent permanently or for an extended period of time **deviation from normal state**, which more or less **threatens the goal** of an organization or its **existence**.

- Crisis are different, but in certain extent meet the following characteristics:
  - moment of surprise,
  - lack of information,
  - increasing number of events
  - loss of control over the situation,
  - vital interests are threatened
  - increasing external pressure on information,
  - developing defeatist mood,
  - panic is started
  - decomposition of common decision-making processes.

**CRISIS SITUATION** — is an **unpredictable or hardly predictable course of events** after disruption of equilibrium states - natural, technological and social systems, threatening lives of people, the environment, economy, spiritual (ecclesiastical) and material values of the people.

## Crisis communication

It represents the organization's ability to openly inform the society (the public) about crisis situations

*(accident, natural disaster, epidemic, financial-, economic- or other crisis),*

particularly on their implications and impacts on nature and society as well as on taken measures.

POSITIVE

NEGATIVE



# MANAGEMENT

drive  
lead  
control  
prove  
know  
manage  
cope  
rule  
achieve, etc.

# CRISIS MANAGEMENT

is a summary of scientific knowledge, professional practice, preventive and decision-making measures allowing managers to **successfully solve crisis situation**.

## CRISIS MANAGER TASKS

**Eliminate** the possibility of a crisis situation and in case of creation **minimizing** their consequences.



**Crisis are highly probable**



**Procedure in crisis must be planned in advance**



**Crisis management must be an integral part of every manager**

## **CRISIS MANAGEMENT**

summary of management activities of crisis management authorities focused on:

- analysis and evaluation of security risks
- planning, organization, implementation and control of activities performed in connection with:

**1. Preparation for crisis situations and their solution**

**2. Protection of critical infrastructure**





# SECURITY SYSTEM

## What is security?

**Security is a complex term** – that is related to:

- *threats*.....that danger security,
- *measures, instrument, institution*.....that should have security ensure and protect,
- *objects*..... that security should have protect.

# Security

is a state,

where dangerous of **threats** for particular objects and its interests were reduced to minimal possible rate.



- **National security** is a state when object (national state as whole or to its significant attributes) does not suffer great danger of -

sovereignty,  
territorial integrity,  
basics of political organization,  
internal order and safety,  
life and health of citizens  
property values and environment.

*\*not even his allies are exposed to threats that would require military or other risky intervention in case of their activation.*

# SECURITY OF THE CZECH REPUBLIC

**External dimension of security of the Czech Republic** - the Ministry of Defence (§ 16 the Act of Competency) as the central government body for ensuring the defense of the country.

**Internal dimension of security** - the Ministry of the Interior of the Czech Republic - by the Law of January 1st, 2001:

- **Act No. 239/2000 Coll., on Integrated Rescue System**
- **Act No. 240/2000 Coll., on Crisis Management**

# Security system of the Czech Republic consist of:

*Constitution of the Czech Republic;*

*Constitutional Law n. 110/1998 Coll., on Security of the Czech Republic,  
Act No. 219/1999 Coll., on Armed Forces of the Czech Republic,  
Act No. 221/1999 Coll., on Professional Soldiers;  
Act No. 222/1999 Coll., on Securing defence of the Czech Republic,  
Act No. 585/2004 Coll., on Compulsory Military Service and its ensuring,*

*„Crisis laws“:*

*Act No. 238/2000 Coll., on Fire Rescue System  
Act No. 239/2000 Coll., on Integrated Rescue system,  
Act No. 240/2000 Coll., on Crisis Management,  
Act No. 241/2000 Coll., on Economic Measures for Crisis Situation*



## Security System consists of individual components:

- o legislative,
- o executive,
- o juridical,



**local and regional government, legal entities and individuals that have responsibility for security ensuring of the Czech Republic.**

# SECURITY SYSTEM OF THE CZECH REPUBLIC

## Control and executive element

- The President
- The Parliament
- Government
- Security Council
  - The Committee for Foreign Security Policy Coordination
  - The Defence Planning Committee
  - The Civil Emergency Planning Committee
  - The Intelligence Activity Committee

## System of foreign policy

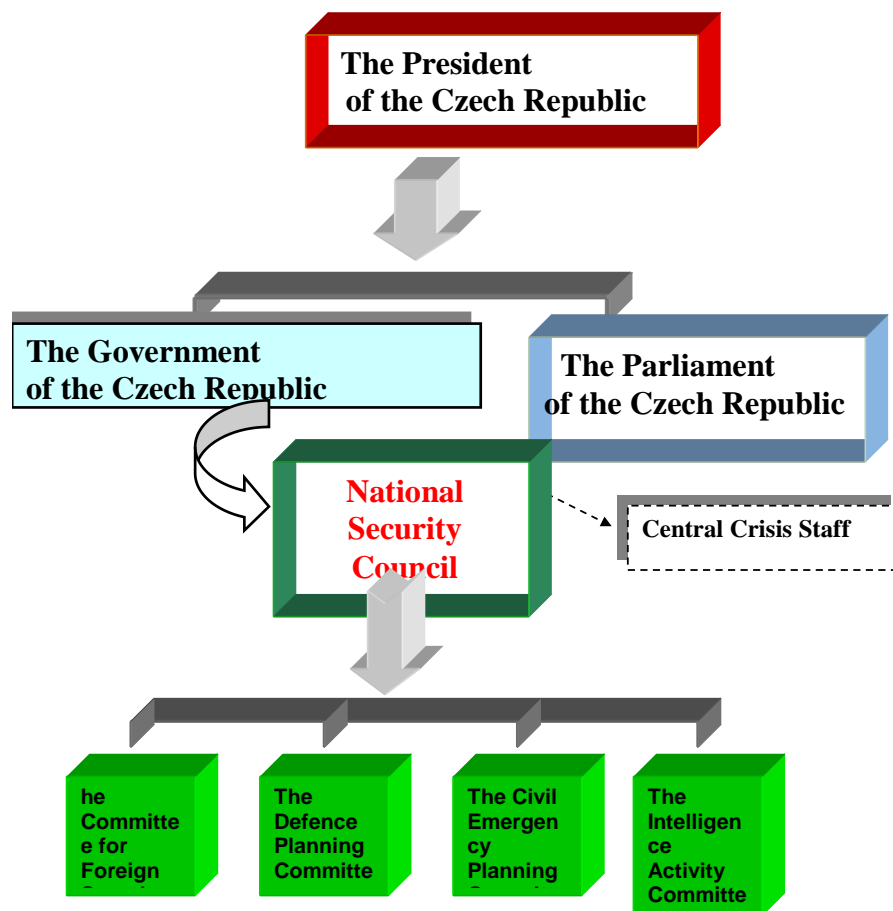
- Services controlled by the Government and minister of foreign affairs..

## System of internal security

- Integrated Rescue System
- The armed security corps
- Civil Intelligence services
- Rescue and emergency services

## Defence system

- Armed forces
- System of economic mobilization
- Support element:
  - Integrated Rescue system
  - The armed security corps
  - Civil Intelligence services
  - Rescue and emergency services



# The National Security Council

**The National Security Council** of the Czech Republic is the governmental advisory body for the security of the Czech Republic. The chairperson is the Minister of the Interior. The other members of the National Security Council are appointed heads of assigned ministries.

It is a permanent **working body** of the Government for coordination of the security issues of the Czech Republic and preparation of proposals to carry it out.

It is established according to **Article 9 of Constitutional Act No. 110/1998 Coll.**, on the Security of the Czech Republic. Security Council, within the scope of delegation established by the Government of the Czech Republic, prepares for the government proposals to ensure security of the Czech Republic.



# THE STATE SECURITY COUNCIL

## ARTICLE 9

- (1) The State Security Council is made up of the Prime Minister, as well as other members of the government pursuant to the decision of the government.
- (2) To the extent of its commission as designated for it by the government, the State Security Council shall prepare for the government proposals for measures to safeguard the Czech Republic's security.
- (3) The President of the Republic has the right to participate in meetings of the State Security Council, request reports of it or of its members, and to discuss with it or its members issues that fall within its decision-making competence.

# Composition of the National Security Council

**President:** the Prime Minister

Vice-President: the Deputy Prime Minister and Minister Foreign Affairs

**Other members are:**

**the Deputy Prime Minister and Minister for Defence**

**the Minister of the Interior**

**the Minister for European Affairs**

**the Minister for Finance**

**the Minister for Industry and Trade**

**the Minister for Transport**

**the Minister for Health**

NSC meetings are also attended by the Governor of the Czech National Bank, the President of the Administration of State Material Reserves, the Manager of the Office of the Government of the Czech Republic, and the Director of the Section of the Prime Minister. The President of the Republic is entitled to attend NSC meetings.



INVESTICE DO ROZVOJE VZDĚLÁVÁNÍ

# CENTRAL CRISIS STAFF

## for providing solutions to crisis situations

**Chairman of Central Crisis Staff  
is according to situation:**

**Minister of Defence**

- in the event of an external military threat to the Czech Republic,
- in the event of the fulfilment of allied commitments abroad and
- in the event of the involvement of Czech Republic's armed forces in international operations to restore and keep peace

**Minister of the Interior**

- in case of other types of threat to the Czech Republic,
- in case of the provision of large-scale humanitarian aid abroad, and
- in case of the Czech Republic's involvement in international rescue operations relating to an accident or natural disaster.



## ■ CENTRAL CRISIS STAFF

The Chairman of the CCS is appointed by the Prime Minister and the President of the National Security Council depending on the nature of the situation:

a) the **Minister for Defence**

b) the **Minister of the Interior**

## ■ WORKING BODIES

### - the Committee on the coordination of Foreign Security Policy

(coordinated by the Minister for Foreign Affairs),

### - the Committee on Defence Planning

(coordinated by the Minister for Defence)

### - the Committee on Civil Emergency Planning

(coordinated by the Minister of the Interior)

### - the Committee on Intelligence

(coordinated by the Prime Minister)



## ■ CENTRAL CRISIS STAFF

Central Crisis Staff is a working body of the Government for crisis situations solution. Its composition and activities are determined by the Statute of the Central Crisis Staff approved by the Government.

The Central Crisis Staff has 36 members.

## Other **Central Crisis Staff** members are:

- a) the Deputy Minister for Foreign Affairs,
- b) the Deputy Minister for Defence,
- c) the Deputy Minister of the Interior,
- d) the Deputy Minister for Justice,
- e) the Deputy Minister for Finance,
- f) the Deputy Minister for Industry and Trade,
- g) the Deputy Minister for Agriculture,
- h) the Deputy Minister for Transport,
- i) the Deputy Minister of Labour and Social Affairs,
- j) the Deputy Minister for Health,
- k) the Deputy Minister for Regional Development,
- l) the Deputy Minister for Culture,
- m) the Deputy Minister for Education, Youth, and Sports,
- n) the Deputy Minister for Informatics,
- o) the director of the Office of the Ministry of the Environment,
- p) the President of the State Office for Nuclear Safety,
- q) the director of the National Security Office,
- r) the director of the Secretariat of the National Security Council,

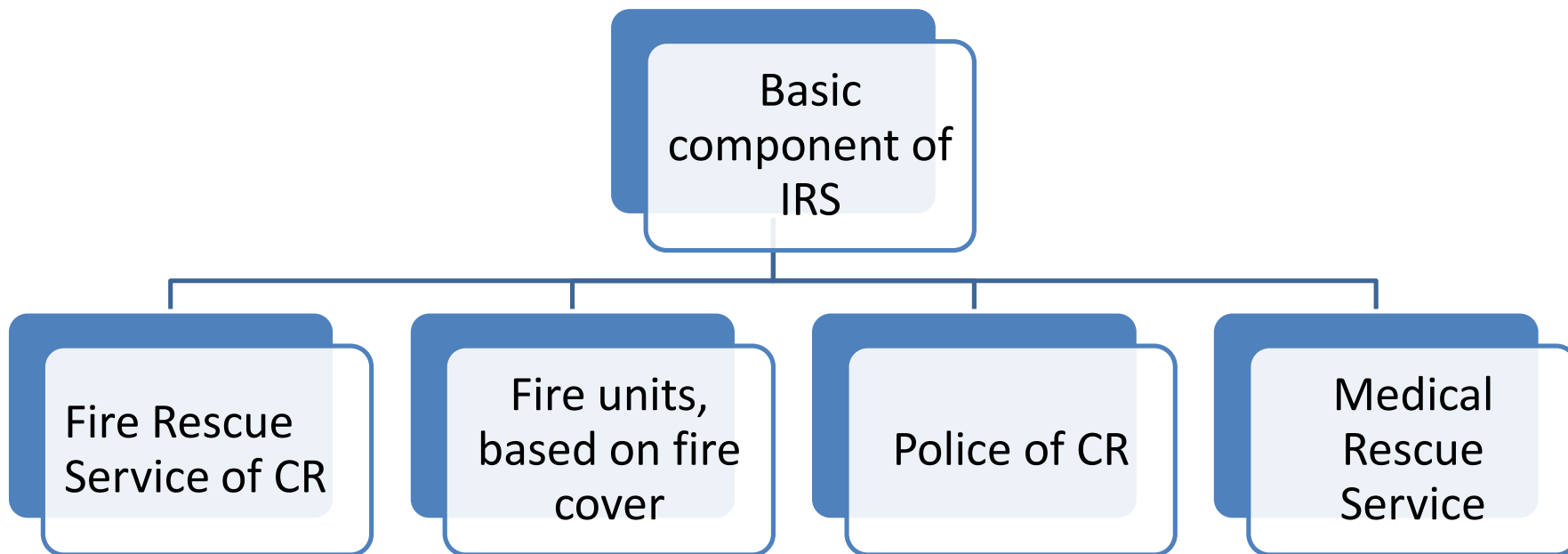
- r) the director of the Secretariat of the National Security Council,
- s) the President of the Administration of State Material Reserves,
- t) the Vice-Governor of the Czech National Bank,
- u) the Manager of the Office of the President of the Republic,
- v) the President of the Czech Telecommunications Office,
- w) the Attorney General of the Czech Republic,
- x) the Chief of Staff of the Army of the Czech Republic,
- y) the Police President of the Czech Republic,
- z) the Director General of the Fire Rescue Service of the Czech Republic,
- aa) the director of the Security Information Service,
- bb) the director of the Office for Foreign Relations and Information,
- cc) the director of Military Intelligence – director of the Military Defence Intelligence,
- dd) the Chief of the Military Intelligence Service,
- ee) the Director General of the Prison Service of the Czech Republic,
- ff) the Central Director of the State Veterinary Administration,
- gg) the Chief Health Officer of the Czech Republic,
- hh) the director of the Czech Hydrometeorological Institute,
- ii) the director of the Office of the Czech Red Cross.

# Integrated Rescue System

```
graph TD; A([Integrated Rescue System]) --> B([Basic bodies]); A --> C([Other bodies]);
```

**Basic  
bodies**

**Other  
bodies**





# INTEGRATED RESCUE SYSTEM

## BASIC BODIS

- Fire Rescue Service of the Czech Republic and Fire units, based on fire cover,
- Police of Czech Republic,
- Medical Rescue Service.

## OTHER BODIES

- Specified forces and means of armed bodies,
- Other armed security services,
- Other rescue services,
- Public health protection authorities,
- Emergency, stand-by, specialised and other services,
- Civil Protection establishments,
- NGOs and civil associations, which can be used for rescue and clean-up operations.