

Crisis management

Integrated Rescue System



INVESTICE DO ROZVOJE VZDĚLÁVÁNÍ

Integratd Resuce System of the Czech Republic



Legislation concerning IRS comes from certain provisions of the Constitution of the Czech Republic and the Charter of Fundamental Rights and Freedoms, respectively of the Constitutional Act on the security of the Czech Republic (no. 110/1998 Coll.).

Competence, in the area of IRS given by Competency Act (no. 2/1969 Coll.), is delegated to the Ministry of Interior. Ministry of Interior is a guarantor of legislation of IRS.

The area of IRS is covered by Act on Integrated Rescue System (no. 239/2000 Coll.) and its two implementing regulations and implementing government regulation. Legislation on IRS was built together with the crisis Law (no. 240/2000 Coll.) and the Law on economic measures for crisis situations (no. 241/2000 Coll.).

These three laws are interconnected by a many links and context.

Basis legal document for Integrated Rescue system is **Law No. 239/2000** on the Integrated Rescue System and on amendment of certain codes, in latter wording, is the basic legal frame.

The Integrated Rescue System

is determined for **co-ordination of rescue and clean-up operations** in case, where a situation requires operation of forces and means of several bodies, e.g. firefighters, police, medical rescue service and other bodies, or in case, where the rescue and clean-up operation is necessary to be co-ordinated from the Ministry of Interior or by a leader of region's level, or by mayors of municipalities with extended responsibilities.

As the Integrated Rescue System are therefore considered the coordinated proceedings of its bodies during preparations for emergencies, and during rescue and clean-up operations.

The Integrated Rescue System

It is system of procedures coordination of IRS during time of **preparation for crisis situations** and in times of action.

This is **not an organization in the form of institutions**, but it is an expression of prearranged rules of cooperation between its bodies.

Integration means that the individual bodies of the IRS provide its resources (equipment, materials, and people) to create purpose driven group of forces and resources for disposal or elimination of crisis consequences.

Integration of various bodies into such group create conditions for the most effective and most efficient use of available resources.

RESCUE OPERATION

It is an activity to prevent or limit the immediate effects of risks caused by extraordinary events, especially in relation to threat of life, health, property or the environment, leading to disruption of causes inducing this extraordinary event.

Remedy work are activities to eliminate consequences of extraordinary events. This activity mainly concerns removal of damaged buildings in danger of collapsing, landscaping, cleaning riverbeds, and decontamination of contaminated people, animals, land and materials.

Material aid

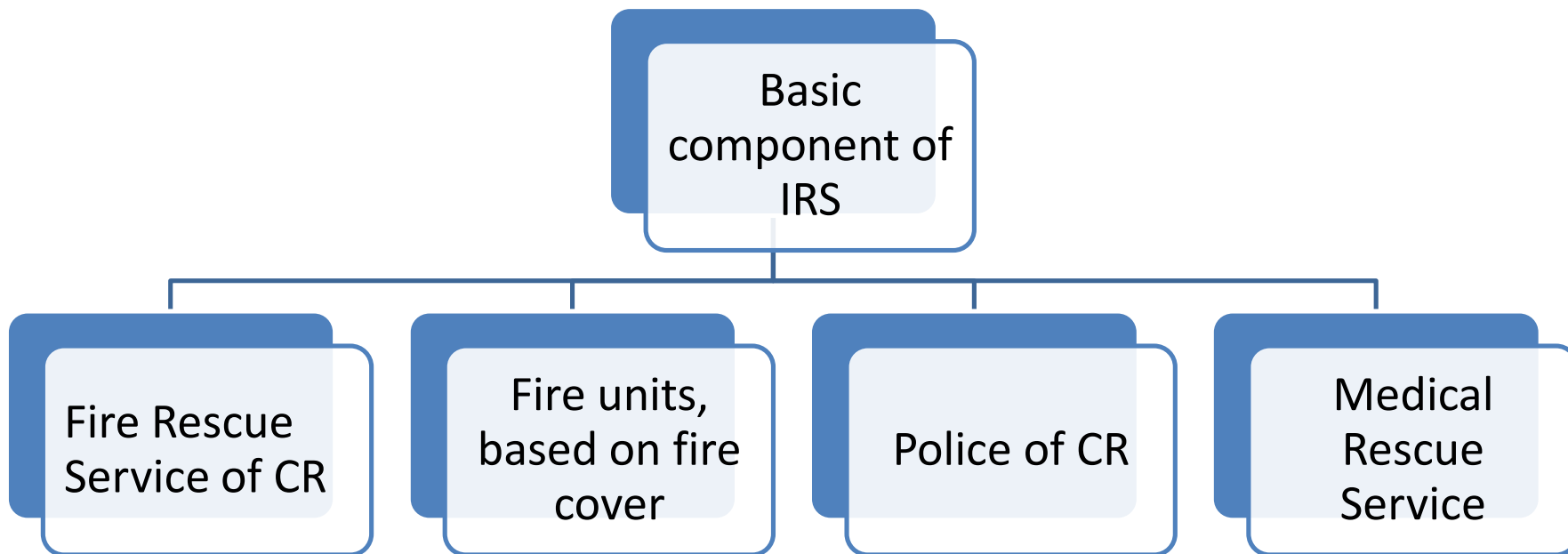
Means providing material resources during rescue and remedy work and exercises on command of commander of intervention, mayor or District Commissioner; material aid can be also provided voluntarily and without call, provided with agreement of intervention commander, mayor or district commissioner.

Integrated Rescue System

```
graph TD; A([Integrated Rescue System]) --> B([Basic bodies]); A --> C([Other bodies]);
```

**Basic
bodies**

**Other
bodies**



INTEGRATED RESCUE SYSTEM

BASIC BODIS

- Fire Rescue Service of the Czech Republic and Fire units, based on fire cover,
- Police of Czech Republic,
- Medical Rescue Service.

OTHER BODIES

- Specified forces and means of armed bodies,
- Other armed security services,
- Other rescue services,
- Public health protection authorities,
- Emergency, stand-by, specialised and other services,
- Civil Protection establishments,
- NGOs and civil associations, which can be used for rescue and clean-up operations.

Coordination of Integrated Rescue system in joint intervention - organizational and operational management.

Each organization use hierarchically structured authorization for **decision making** from the head of the organization to ordinary worker or official. That **management** is usually called organizational management and is expressed by the organizational rules.

Rescue, military, security and other organizations also have organizational management – it is called **operational management**.

Using of Integrated Rescue System is running under **operational management** and **permissions** is set in legislation for:

- operational centres of Integrated Rescue System,
- permissions of an officer in charge,
- mayor of the municipality with extended powers,
- Governor of the Region,
- and other subjects.

The operational and information centres of the Integrated Rescue System

- The task of the **operational and information centers** of Integrated Rescue System are performed by operational and information centers regional fire rescue service. Physically, they are in all major regional cities.
- Except of operational and information centres of Integrated Rescue System exist emergency call technical centres that primarily provide operation of emergency communication via European Emergency Call Number 112.

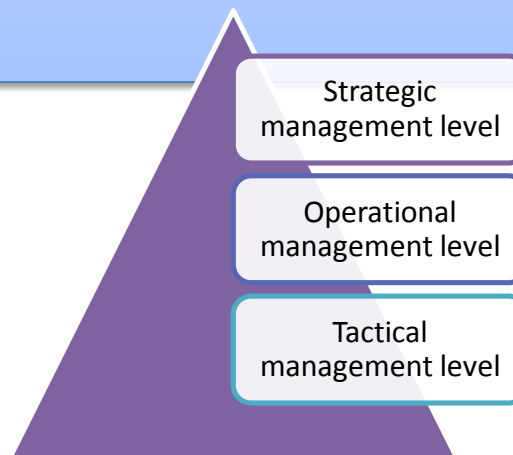
TASKS OF OPERATIONAL AND INFORMATION CENTRES

- cooperation with Operational and information centres of other regions and bodies of Integrated Rescue System,
- receive and evaluate of information on fires and other extraordinary events,
- notification of Integrated Rescue System bodies and other public authorities,
- calls and puts SAP,
- requires and organizes personal and material assistance for legal person and cooperate in solving KS KS and Security Council of the Region,
- performs warning and informing population (R & D).

Tactical, operational and strategic level of management during extraordinary event.

There are three levels of management that differ according to the subject that conduct coordination of rescue and remedy work:

- ❑ **strategic** management level – coordinator is a mayor of municipality with extended powers, Regional Commissioner or Minister of Interior.
- ❑ **tactical** management level – coordinator is an officer in charge,
- ❑ **operational** management level – coordinator of one of the operational and information centres of some of the basic bodies of the IRS,




Tasks of state and self-government authorities

The scope of the regional authorities, the authorities of Municipality with extended powers and municipal authorities of other municipalities during coordination of rescue and remedy work by the Act No.239/2000, on IRS are the **performance of the public administration under delegated powers**

☐ The tasks of the municipal office and the mayor

- Regional bodies organize, regulate and unify the IRS within the region,
- Regional Commissioner approves the emergency plan of the region, external emergency plans and an alarm plan of IRS of Region.



Regional Commissioner ensures preparedness of the Region for crisis situation solution. Apart from his executive competences he organizes trainings and coordinates rescue and remedy works (§ 28 clause 3), he ensures control competence through the Security Council of the Region toward Integrated Rescue system. The IRS bodies are obliged according to Government regulations to put up annual report about its activities to Security Council of the Region.

The tasks of the municipal office and the mayor

Act on IRS assign municipal authorities to provide preparedness of the municipality for extraordinary events and to participate in rescue and remedy work and to protect population.

For this purpose, the **Regional Authorities of each municipality** have majority of tasks aimed at protection of population (especially warning, evacuation and emergency survival).

In area of **rescue and remedy work** fulfils these tasks:

- organizes preparedness of the municipality for extraordinary events,
- participate in rescue and remedy work together with the IRS.

Mayor of Municipality during the crisis state:

- provides warning and informs people, staying on the Municipal territory, of imminent danger
- organizes evacuation of people from the endangered Municipal area together with an officer in charge or with Mayor of Municipality with extended powers.
- organizes activities of the Municipality under conditions of emergency survival of population.
- is entitled to call legal and natural persons to provide personal or material assistance.

Obligations of Entities in accordance with law on Integrated Rescue System

Obligations of legal and natural entrepreneurs are **dual nature**.

Firstly, **active**, that is primarily concerned with their participation during intervention and fulfilling of certain obligations to its employees.

Secondly, **passive**, obligation to toleration, in particular limitations in area of population protection (tolerate an evacuation, etc.), tolerate property access, and similar actions (Act No. 240/2000 Coll.)

Obligations of Legal and Natural Undertaking Entities

Legal and natural undertaking entities are obliged to provide material means inevitable for crisis situation solution on request of the officer in charge, Mayor of the Municipality or Operating and Coordination Centre of IRS.

If a legal entity is included into the emergency plan of the Region or into external emergency plan, it is obliged to provide protective measures for its employees and organize rescue work together with its employees.

Obligations of Natural Entities

- During the crisis situation natural entity is obliged to obey instructions of the **authorized crisis management authority** to register at determined place for possible imposition of **labour obligation and labour assistance**,
- to report at the Municipality, in the administrative area where he/she will possess, as temporary change of residence
- to endure limitations resulting from crisis measures determined during the crisis state,
- to perform imposed labour obligation or labour assistance,

❖ Agreement on the regional level

Regions in accordance with the Act on the IRS have right to provide mutual assistance between neighbouring regions of different countries, on the basis of border agreements according to Act on the IRS.

The regional authority is obliged to conclude such agreements "with the territorial unit of a neighbouring state", therefore, it is an agreements at the regional level.

It requires publication of the agreement in the Government Bulletin for regional and municipal authorities.

Use of IRS at international cooperation

❖ Providing assistance abroad

By the Act on IRS is Ministry of Interior given competence to decide in cooperation with the Ministry of Foreign Affairs on humanitarian aid provided by the state abroad and participation in international rescue operations.

❖ Providing humanitarian aid

According to Government Decree No. 302/2004 humanitarian assistance is coordinated by the Ministry of Foreign Affairs of the Czech Republic, while the decision to provide financial resources for humanitarian aid has the Minister of Foreign Affairs.

Information system that informs of humanitarian needs or rescue operations is provided by **special contact points** operated by state.