

Study material

Subject title: **CRISIS MANAGEMENT**

Author: Ing. et Ing. Hana Malachová, Ph.D.

Topic 7: Command, control and cooperation in operation under national command

Content:

Introduction

1. Characteristics and division of operations
2. Command and control system and cooperation
3. Place and role of the Joint Operations Centre in the management of crisis situations.

Conclusion

Introduction

Quantity and quality of forces and means for task accomplishment is not decisive. It is necessary to use these resources effectively and efficiently. The cooperation among the forces deployed take a priority place in crisis situations. Its underestimation may result in mission failure and even the loss of operating forces.

1. Characteristics and division of operations

Except of combat operations the Armed Forces fulfils a large area of non-military tasks both outside the Czech territory (within NATO and the EU) and on the Czech Republic territory within the crisis management system of the state.

To support civilian authorities in non-military crises it is stated:

In the Czech Republic the armed forces are ready to provide forces and means in the necessary extent and availability to support the Integrated Rescue System or Police CR. These forces are reinforced by units of active reserves. In principle, all forces and means will be used in favour of Integrated Rescue System or Police CR.

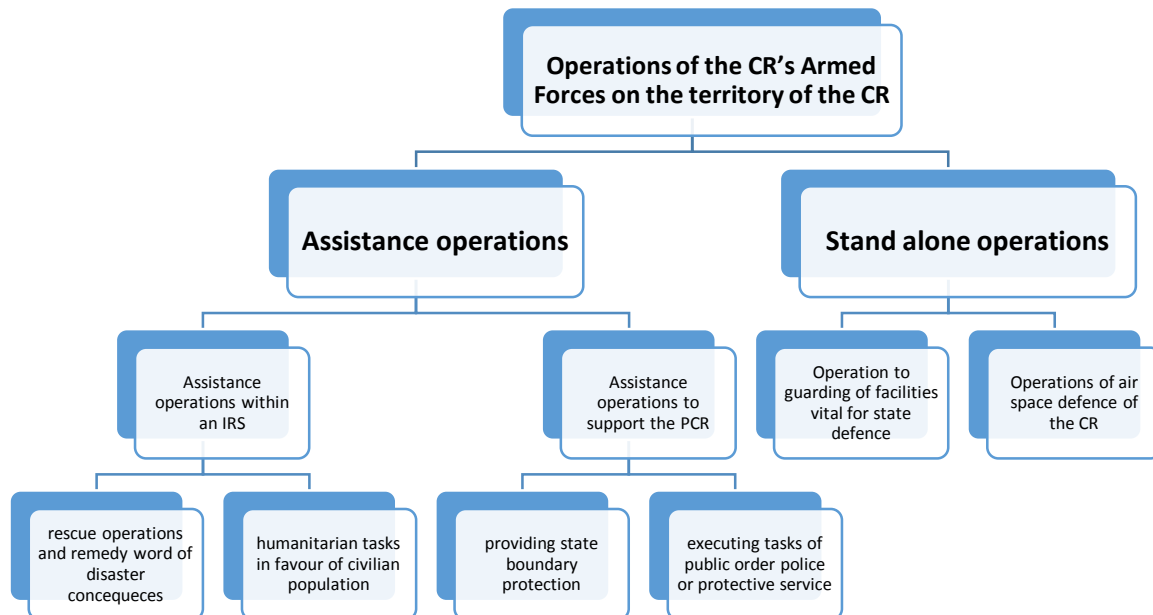
It is work based on the laws that are being planned, prepared and implemented in the form of operations under national command.

- In Army of the Czech Republic, there are operations within the crisis management measures of the Czech Republic and performance of tasks in PVO of the Czech Republic;
- usually without pre-planned use of weapons and ammunition;
- except using weapons in self-defence during the immediate threat of life or defended and protected areas or objects (airspace defence, guarding of objects important for national defence, etc.).

Basic characteristics of national operations:

- **National operations** are military operations conducted only by one state². In the conditions of the Czech Republic, it will generally involve operations of the CR's armed forces within the measures of crisis management of the CR with a possible link to NATO or EU crisis management system.
- Operations of the Czech armed forces on the territory of the CR.
- their character is affected by the security situation in the area of deployment;
- the number and duration of the troops deployment;
- Army of the Czech Republic works in these operations usually on request;
- for leading operations are predetermined Constant Cash Force (SHS) and available power;

How to use Czech Armed Forces?



Operations of the CR's armed forces on the territory of the CR.

In case of operations controlled by the CR's government, the CR's armed forces may execute primarily the following tasks:

- A. Assistance operations within an integrated rescue system of the CR (IRS).
 - rescue operations and remedy word relating to elimination disaster consequences,
 - carrying out of humanitarian tasks in favour of civilian population.
- B. Assistance operations to support the police of the CR
 - assistance operation to providing state boundary protection,
 - assistance operation to executing tasks of public order police or protective service for lack of the Police of the Czech Republic force and mean.
- C. Assistance operation to guarding of facilities vital for state defence;
- D. Operations of air space defence of the CR

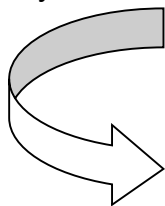
The use of the CR's armed forces in this kind of assistance operations comes from the demands of responsible central and regional crisis management authorities.

2. Command and control system and cooperation

Command and control is the process of purposeful activity of command authorities (commanders and staffs) to task and direct organic and assigned forces and means to most effectively use all available sources during planning, organisation, coordination and conducting activities to fulfill assigned objectives in the specified time limits with minimal strain and minimal losses.

Command represents the process, by which the commander makes decisions and transfers his will to his subordinates. The commander has the authority, responsibility and the duty to act, or to freely decide not to do so, for the purpose of accomplishing objectives specified by the superior. Command is also the art of gaining and using available information in a creative way while skillfully and effectively motivating and directing subordinates to achieve assigned tasks.

Command and control must be firm, flexible, continual and maintain operational security.



- firmness
- continuity
- command flexibility
- *interoperability*
- operational security

Firmness of the command lies in the consistent implementation of the elaborated and reasoned decision. It is achieved by the timely decision taking, precise formulation of tasks to subordinates, timely delivery

Command flexibility lies in the constant gathering and processing of information, anticipating situation developments and flexibly responding to the changes. Flexibility is achieved by timely decision-making and giving tasks to subordinates and primarily operationally (concurrently) specifying tasks based on analysis of likely situational development.

Continuity of command consists in constant force control, in maintaining continual cooperation and mutual awareness. It is achieved by appropriate deploying of command posts, their timely redeployment, maintaining reliable communications and assigning the command systems and communication protection measures required against adversary activities, as well as fast restoration if they are disrupted.

INVESTMENTS IN EDUCATION DEVELOPMENT

Operational security lies in the concealing of all measures related to operation preparations and control. It is achieved by limiting the number of people who acquaint themselves with the operation (combat) plan or commander's decision, the covert command posts deployment and redeployment, the consistent observance of classified information protection principles, using information protection means during their transfer, the observance of communication security principles, camouflage and disinformation.

Basic element of command

- Authority
- Decision-making process
- Leadership*
- Control

Basic element of control

- Information
- Communication and information system
- Organisation structure

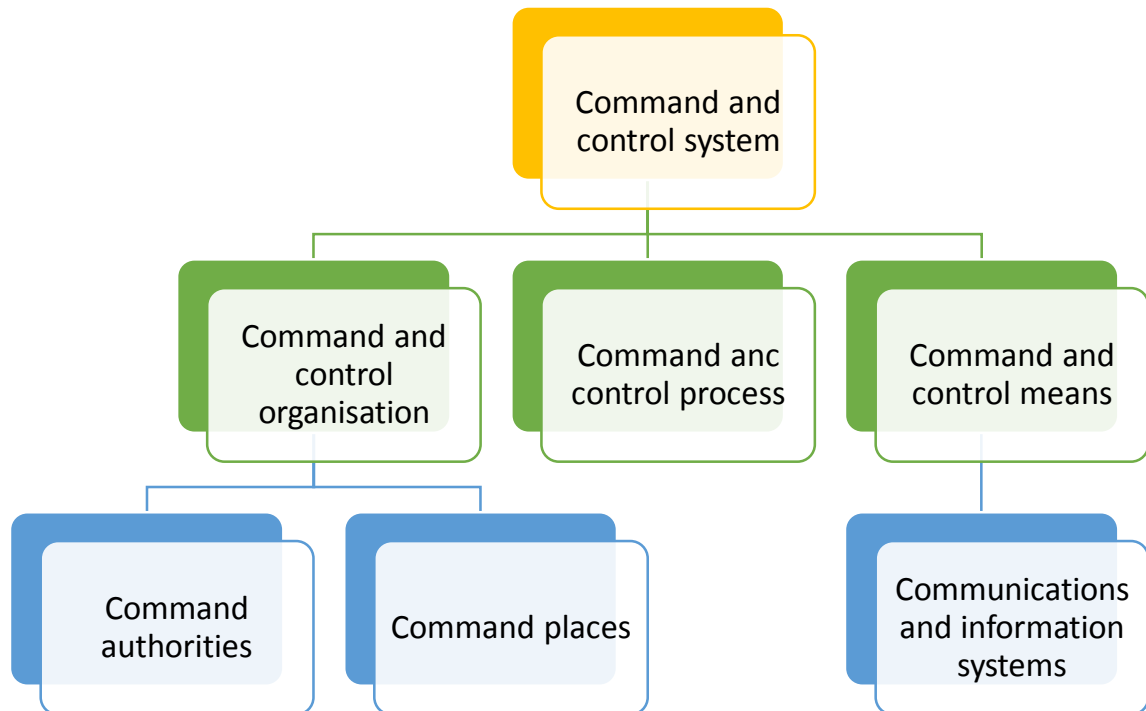
****Leadership** represents the commander's ability to motivate, persuade and gain people in his vicinity for active involvement in achieving common, assigned, or in the near future, expected tasks. The art of leading is one of the most important qualities every commander should have if he is to command successfully.*

Command and control support

It is formed by particular components that are integrated into a single integrated system on all levels for the purpose of resource management and acquisition of knowledge and understanding of the situation for commanders and staffs in the planning, preparation, management and evaluation of operations.

Command and Control System - is a set of technical equipment, people and processes realized by those people, that provide necessary support to commanders in planning, tasking and control of combat activities of subordinate forces and resources in accordance with defined tasks and objectives.

INVESTMENTS IN EDUCATION DEVELOPMENT

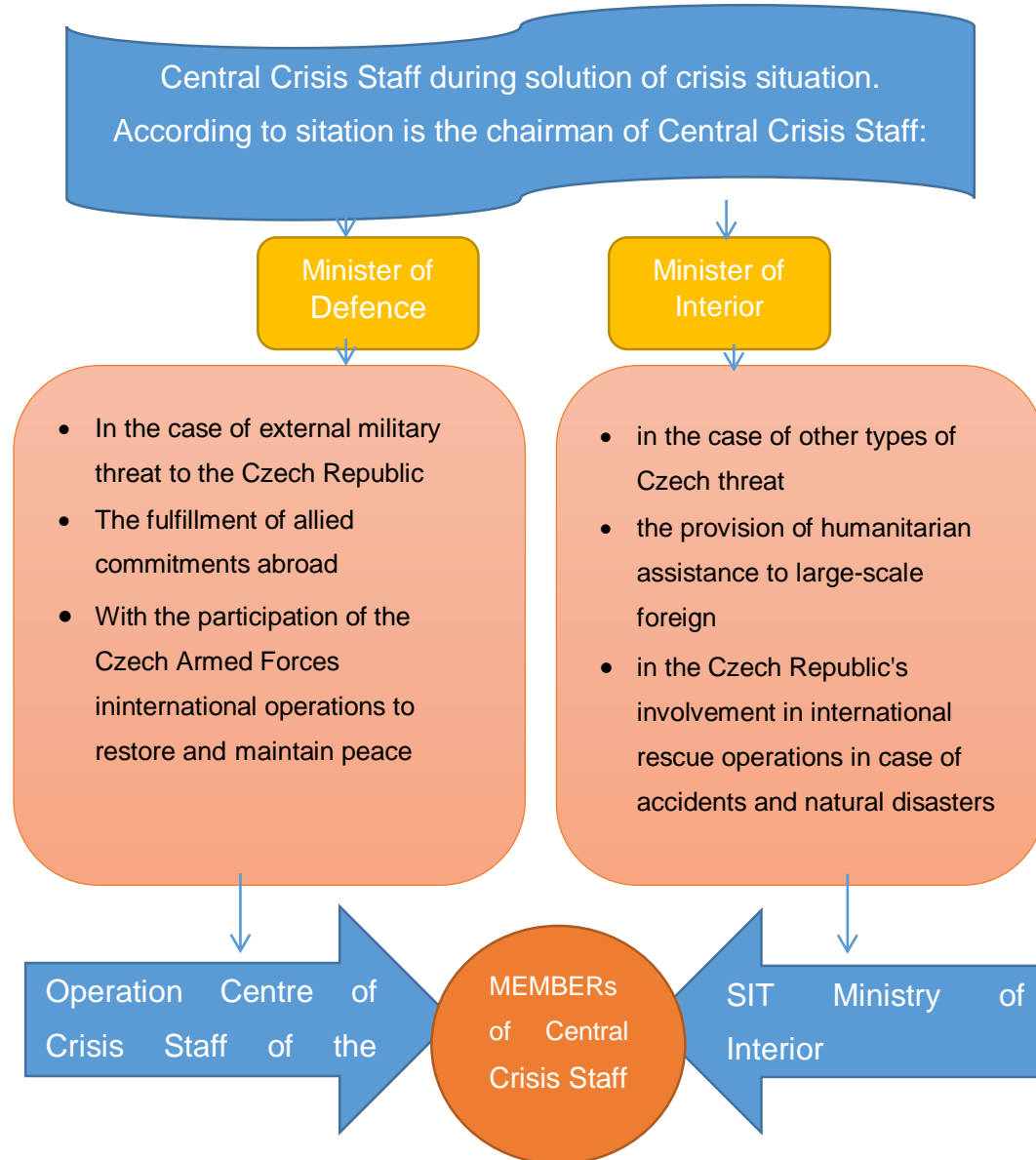


In general, the effectiveness of command and control operations mainly depend on:

- the effective command and control organisation,
- respecting of specifics in command during crisis, humanitarian and rescue operations and
- ability to master requirements a deployment of forces and means of the Army of the Czech Republic.

INVESTMENTS IN EDUCATION DEVELOPMENT

The Strategic place on the state level for crisis management is a **Central Crisis Staff**.



At the regional level there are created **Crisis Staffs of the Regions and Municipalities**.

Cooperation between components of the Army of the Czech Republic and state and local authorities coordinate the Regional Military Commands.

Regional Military Commands solve the questions concerning cooperation and support of forces and means of the Army of the Czech Republic in the region with emphasis on comprehensive security (possibility of catering, accommodation, refilling of fuel, parking of a large number of techniques, etc.) in order to minimize costs of Army of the Czech Republic (free accommodation, accommodation paid by local authorities...).

Regional Military Commands provide information about conclusions from the meeting of the Crisis Staff and Security Council of the Region in problem of the region.

Rescue work are managed a coordinated in the area of deployment by officer in charge. Officer in charge is usually the commander of the fire brigade or deputy of Fire and Rescue Service of the Czech Republic with the right of priority command. If there was not appointed officer in charge at the place of intervention, activity of IRS is controlled by commander or supervisor of intervening forces and means of IRS components that provide prevailing activity.

3. Place and role of the Joint Operations Centre in the management of crisis situations.

The Joint Operations Centre of the Ministry of Defence of the Czech Republic (JOC) is a ministerial management authority for deployment of Czech military forces on foreign NATO, EU, UN and OSCE missions and operations and their command, as well as for crisis management operations involving the participation of Armed Forces of the Czech Republic.

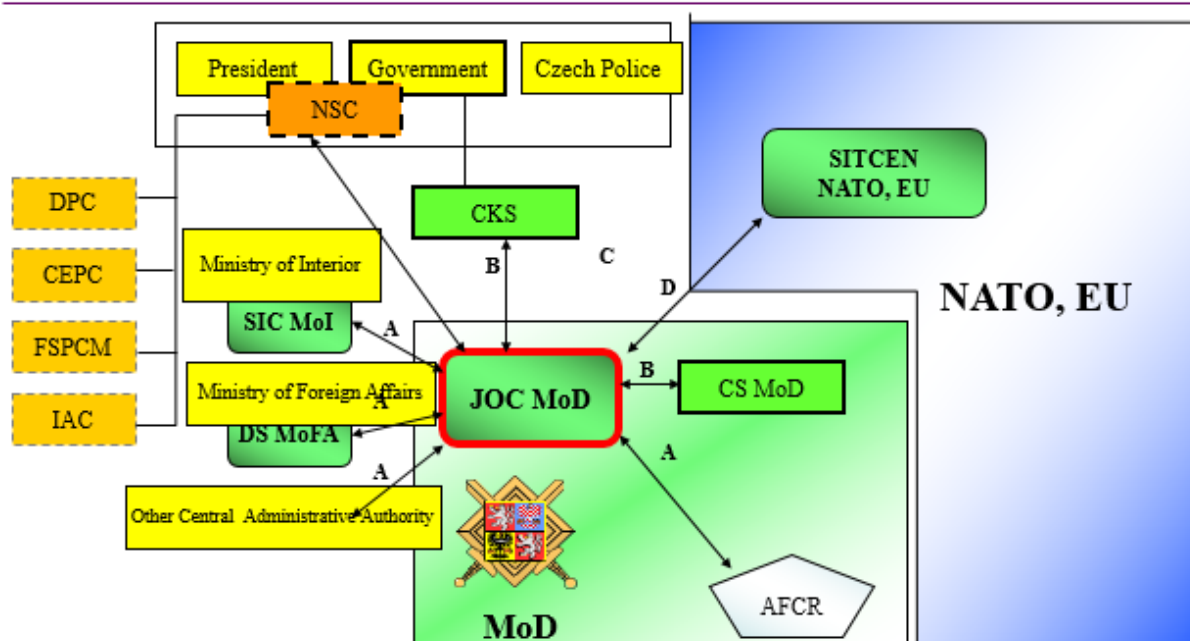
JOC manages economic, logistical and operational support of these forces and means. It is a coordinator of selection, training and deployment of troops to the observer and other positions in peacekeeping missions, in particular the UN, OSCE and EU.

The personnel of the Armed Forces of the Czech Republic are deployed to peacekeeping missions on the basis of requirements of international governmental bodies which include the United Nations, Organisation for Security and Cooperation in Europe, and the European Union (UN, OSCE, EU). Their tasks result from mandates of the specific peacekeeping missions.

As a rule, they monitor political, military and security situation in the region of armed conflict. They actively cooperate with governmental and non-governmental humanitarian organisations, and they serve as mediators in the process of restoring peace.

JOC manages and coordinates activities in cases of Army of the Czech Republic deployment in crisis situation in accordance with the Act No. 219/1999 Coll. It ensures the activities of the Crisis Staff of Ministry of Defence, realizes his conclusions and decisions. In accordance with Government Resolution No. 33/1999 is destined to support the activities of the Central Crisis Staff.

Crisis management authorities in NATO, EU

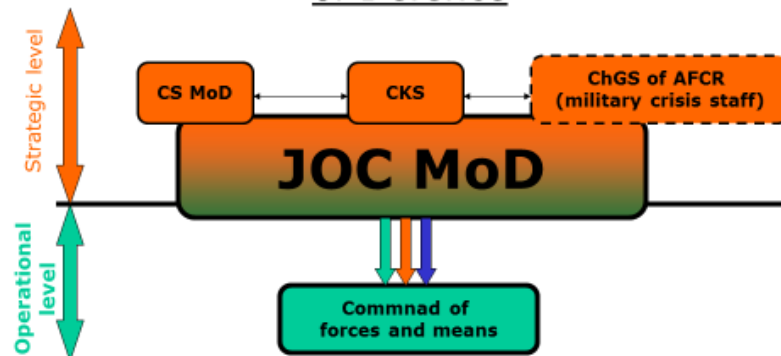


JOC tasks

- JOC MoD implements the decisions taken by Crisis Staff of MoD in terms of Army of the Czech Republic in the field of crisis management and it is an executive element in the process of crisis management within the MoD.
- JOC MoD is directing authorities for planning of deployment of forces and means of Army of the Czech Republic in foreign operations, including their national command and realisation of deployment and operational command of forces and means of Army of the Czech Republic in crisis situation in the Czech Republic.
- It manages stable forces and means during crisis and emergency situation solution that are earmarked for the tasks given time standards.

Cooperation relations

ROLE of Joint Operations Centre of MoD in crisis management in resort of Ministry of Defence



Devoted forces and means of Army of the Czech Republic have a nationwide scope. It is therefore necessary to ensure centrally control and security of cooperation with civilian crisis management bodies and interdepartmental coordination.

Conclusion

Preparation and management of operations of Army of the Czech Republic in the national security system is an interdisciplinary and interdepartmental approach. All activities set out in planning documents (lecture no. 6) require well-prepared staff a versatile material and financial security.