

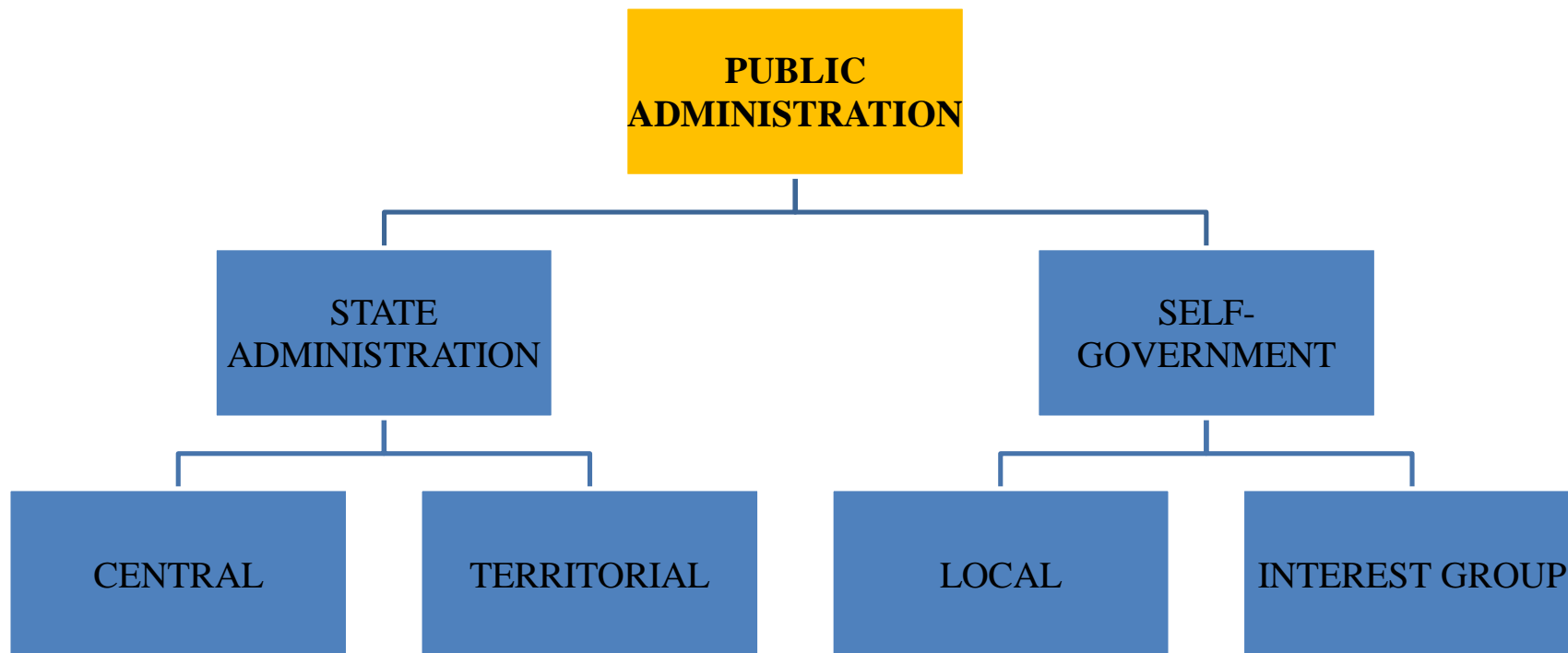
Crisis management

Planning and managing documentation of crisis management

Planning and managing documentation of crisis management

MOTTO: „Fortune favours the prepared“.

STRUCTURE OF PUBLIC ADMINISTRATION



PUBLIC ADMINISTRATION

- ✓ **Public administration** is defined as the **administration of public affairs** within a society that is organized in a state.
- ✓ The Czech theory of public administration distinguishes the following components of public administration **state administration** and **self-government**.
- ✓ Public administration is a social phenomenon that is linked with the realization of the executive power of the state, including the specific position of the self-government.

THE STATE ADMINISTRATION

- ✓ The state administration system is vertically hierarchically organized on the principle of superiority and inferiority.
- The decision to proceed monocratic (but there are also collective bodies).
- The establishment of state administration prevails appointment, the choice is exceptional.
- The autonomy of decision-making is limited.
- Review of a decision is possible in terms of factual accuracy and compliance with the law.

SELF-ADMINISTRATION

- **Self-government** is not organized hierarchically and vertically => between higher and lower government there is no relationship of superiority and inferiority.
- The intervention of higher authorities is possible only on the basis of a special law.
- Self-government is based on the principle of collegial decision-making (but e.g. Mayor is monocratic body).
- The authorities are elected; others are appointed and subordinate or accountable to the elected ones.

Characteristics of crisis planning

Crisis planning of the Czech Republic

is a comprehensive set of **procedures, methods and measures** that the relevant authorities and designated entities use in the prevention, preparation and responding to operation in crisis situations.

The goal of contingency planning in the Czech Republic:

- **Ensure the state preparedness for solving crisis situations.**
- **Ensure concordance** of security policies and applications of forces and means of the state in ensuring its security together with possibilities, capabilities and usability of forces and means that state have.
- **To create an organizational tools** for carrying out the tasks of crisis management in the prevention of crisis and crisis management solution.

Contingency planning for non-military crisis situations

it is set of planning activities, procedures and links undertaken in preparation for crisis situations:

- **Planning documentation**
- **Managing documentation**



Documentation is prepared in writing and printing variations.

**Contingency planning for
non-military crisis situations
(coordinated by Ministry of
Interior of the Czech Republic)**

set of planning activities, procedures and links
undertaken in preparation for crisis situations:

- ☐ in threats of public order and internal security of the Czech Republic,
- ☐ as a result of threats of economic security of the Czech Republic,
- ☐ as a result of danger of health and lives of a large number of persons, properties and the environment of great magnitude,
- ☐ in threat to the fundamental values of democracy, freedom, lives and health of citizens in other countries.

Crisis planing of the Region (Municipality with extended powers)

Regional Commissioner

ensures preparedness of the Region for crisis situation solution; other regional authorities participate in it.



Manages and controls preparatory measures, activities leading to solution of crisis situations and to mitigation of consequences implemented by territorial administrative authorities within regional jurisdiction, by authorities with extended powers, municipal authorities or legal and natural entities.

For this purpose:

- a. establishes and managers the Security Council of the Region ,
 - b. establishes and manages the Crisis Staff of the Region,
 - c. approves the Regional contingency plan after being discussed in the Regional Security Council,
 - d. requires from the Regional Fire Rescue Service the data on
-

- a) capacity of health, accommodation and catering facilities,
- b) subject and scope of activities of legal and natural undertaking entities in the area of
- c) manufacturing and services, production programmes and production capacity, range of raw material stocks, half-finished and finished products, number of employees and their qualification,
- d) number of employees in manufacturing process and number of persons living in the areas of presupposed evacuation,
- e) quantity, composition and location of produced, used or stored hazardous substances,
- f) quantity of water retained in water reservoirs,

- h) number and types of transport, mechanization and production assets owned by legal entities or natural entities and types of produced and retained natural energy,
- i) settlement of inner areas of production facilities, or eventually other facilities important
- j) for crisis situation solution, water supply networks, sewerage systems, products pipe lines and energy networks,
- k) building facilities designed to protect citizens in crisis situations, to ensure rescue works, to store civil protection material, to protect and hide operators of critical services,
- l) land areas of grown agricultural products, species and number of farm animals bred by
- m) legal and natural entities, in case these data are inevitable for processing the contingency plans for preparedness and solution of crisis situations.

**If these data is essential for emergency planning
and crisis situations solving.**

Mayor of Municipality with Extended Powers

- a) **koordinuje záchranné a likvidační práce , poskytování zdravotnické pomoci, provádění opatření k ochraně veřejného zdraví a k zajištění bezodkladných pohřebních služeb,**
- b) **koordinuje nouzové ubytování, nouzové zásobování pitnou vodou, potravinami a dalšími nezbytnými prostředky k přežití obyvatelstva,**
- c) **koordinuje zajištění ochrany majetku na území, kde byla provedena evakuace.**

Mayor of Municipality with Extended Powers

Mayor

ensures preparedness of Municipal administrative district for crisis situations solution; other authorities of the Municipality with extended powers participate in this preparedness.



manages and controls preparatory measures, activities aimed at crisis situation solution and mitigation of its consequences executed by territorial administrative authorities within the administrative district of the Municipality with extended powers, municipal authorities, legal and natural entities within the administrative district of the Municipality with extended powers

For this purpose:

- ☐ establishes and manages the Security Council of the Municipality with extended powers within the area of the administrative district of the Municipality with extended powers,
- ☐ organizes preparation of the administrative district of the Municipality with extended powers and participates in their solution,
- ☐ approves the contingency plan of the Municipality with extended powers after discussion in the Security Council of the Municipality with extended powers,
- ☐ requires the data from the Regional Fire Rescue Service

Mayor of the Municipality with extended powers further

- establishes and manages the Crisis Staff of the Municipality with extended powers within the territory of the administrative district of the Municipality with extended powers, which is at the same time the Crisis Staff of the territory of the administrative Municipal district,
- ensures, during the crisis situation, implementation of stated crisis measures under conditions of the administrative district of the Municipality with extended powers; the administrative authorities located on the territory of the administrative district of the Municipality with extended powers and legal and natural undertaking entities are obliged to fulfil stated crisis measures,
- fulfils the tasks stated by the Regional Commissioner and crisis management authorities during preparedness for crisis situations and their solution,
- is responsible for use of information and communication means and tools of crisis management designated by the Ministry of Interior.

Municipal Council

- informs, in the usual way for a given location,
- legal and natural entities about the nature of potential threat,
- about prepared crisis measures and methods of realization.

Základem **ŘEŠENÍ** krizových situací je:

- znát pravděpodobná rizika,
- mít zpracován systém reakce na ně,
- mít připravené řešení,
- mít připravené síly a prostředky na jejich řešení.

Důležitým hlediskem je při rozhodování vždy sama povaha hodnot, které jsou vystaveny ohrožení.

PŘEDVÍDÁNÍ KRIZOVÝCH SITUACÍ – v prostředí nejistoty

- **NEJISTOTA**

je průběh možných alternativních činností, kdy některé alternativy nejsou známy (rozpoznány) a mohou podstatně ovlivnit výsledek celého zkoumaného procesu. Nejistota se projevuje v přítomnosti konkrétních faktorů, které nejsou vždy známy.

Z toho plyne **MÍRA RIZIKA.**



Crisis plans



Basic part of regional crisis plan

Basis part

- characteristics of organisational crisis management,
- overview of possible risk sources and threat analysis,
- overview of legal entities and entrepreneurs to ensure compliance measures based on the crisis plan
- an overview of critical infrastructure elements and European critical infrastructure located in the region

Operational part of regional crisis plan

Operational part

- overview of crisis measures and means of ensuring their implementation,
- plan of necessary supplies,
- way of meeting regulatory measures
- overview of links to the parties involved in the crisis preparedness and their solutions
- development of type plans procedures for dealing with specific types of impending crisis situations identified in the analysis of threats

Auxiliary part of regional crisis plan

Auxiliary part

- overview of legislation useful in preparation of crisis situations and their solutions
- principles of handling with crisis plan
- geographic documentation
- other documents related to crisis preparedness and management

Crisis plan of Municipality with extended powers

Crisis plan of the Municipality with extended powers

fulfills the role of crisis documentation of municipal authority, Security Council of Municipality and Its Crisis staff.

Structure of the plan:

- Basic part
- Operational part
- Auxiliary part

It contains a summary of the measures and procedures to solve crisis situations. It is a summary of planning, methodological and information documents, used for decision making, managing and coordination of activities of crisis management authorities in crisis situation.

Flood plans

Flood Plan as the basis document for **flood protection** is used to coordinate activities in the area at the time of the flood situation.



Is a sum of organizational and technical measures that are needed to avert or mitigate of damage of lives and property of citizens and the environment during the floods.



Flood plans of smaller units have to be **in accordance with** the Flood Plan of higher-level, the compliance is certified by the appropriate flood authority on the title-page of flood plan.

Flood plan of Municipality

the territorial range of the expected flooding

preparation and security of sharing information

organizational, technical, evacuation and other concrete measures

use of own, locally available forces and means of IRS and other locally available forces and means of legal and natural entities.



Aims at saving endangered inhabitants and properties in its territorial powers.

Food plan of Municipality with extended powers:

- overview of hydrological data over the administrative area,
- the possible extent of floods N-year high water,
- flooding risks known throughout the administrative area,
- organizing flood forecasting and warning services,
- links to documentation crisis management, where the total overview of all the numbers and equipment available forces and means the IRS,
- a list of other available forces and means within the administrative area available for security and rescue work.

⇒ This is a **plan of organizational and operational concept** with a strong element of controlling, cooperative and coordinating character. It is a document allowing organized management and regulation of aid provision to affected sites in the administrative district of the municipality with extended powers.

Povodňové orgány obcí s rozšířenou působností

(zákon č. 254/2001 Sb., o vodách...

Starosta obce

- ✓ Zřizuje povodňovou komisi obce a je jejím předsedou.
- ✓ Další členy komise jmenuje ze zaměstnanců obce zařazených do obecního úřadu a zástupců orgánů a právnických osob, které jsou způsobilé k provádění opatření, popřípadě pomoci při ochraně před povodněmi.

Legislation related flood protection

- Directive of the European Parliament and of the Council on the assessment and management of flood risks from October 23rd, 2007
- Act No. 254/ 2001 Coll., on Water,
- Act No. 239/2000 Coll., on Integrated Rescue System,
- Act No. 240/ 2000 Coll., on Crisis management,
- Act No. 305/ 2000 Coll., on River basins
- Act No. 12/2002 Coll., on State Assistance in Renewing a Territory Affected by a natural or Other Disaster,
- Act No. 128/ 2000 Coll., on Municipalities,
- Act No. 7/ 1992 Coll., on Enviroment,